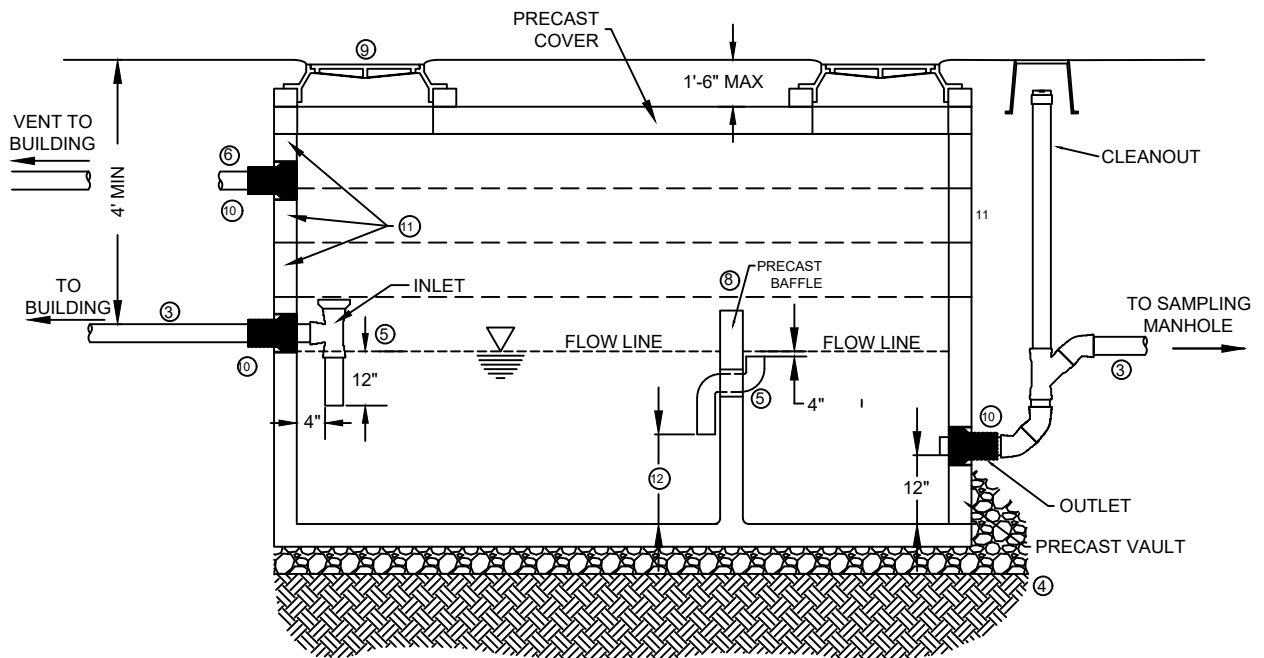


**PLAN VIEW**



**PROFILE VIEW**

**NOTES:**

1. THE SAND / OIL SEPARATOR CAPACITY IS DEFINED AS THE STORAGE VOLUME OF THE VAULT BELOW THE OUTLET PIPE ELEVATION.
2. THE SAND / OIL SEPARATOR SHALL HAVE A MINIMUM CAPACITY OF 450 GALLONS.
3. THE INLET PIPE SHALL BE BETWEEN ONE AND THREE INCHES HIGHER THAN THE OUTLET PIPE.
4. THE SAND / OIL SEPARATOR SHALL BE INSTALLED LEVEL AND ON A COMPACTED FOUNDATION WITH 12" BEDDING MATERIAL AS SPECIFIED IN 407.01.
5. PIPING THROUGH BAFFLE WALL SHALL BE 6" SOLVENT WELD PVC. THE INLET AND OUTLET PIPES SHALL BE GASKETED PVC.
6. THE SAND/ OIL SEPARATOR MAY BE VENTED INDEPENDENTLY THROUGH THE BUILDING, AWAY FROM AIR INTAKES, MIN SIZE 2", OR THROUGH VENTED LIDS.
7. SANITARY WASTES SHALL NOT BE PLUMBED TO SAND / OIL SEPARATOR.
8. THE DIMENSIONS AND CONFIGURATION OF THE VAULT AND BAFFLE SHALL BE ACCORDING TO THE MANUFACTURER'S REQUIREMENTS FOR THE SIZE OF INTERCEPTOR INSTALLED. THE VOLUME OF THE FIRST CHAMBER SHALL BE DOUBLE THAT OF THE SECOND CHAMBER. THE TOP OF THE BAFFLE WALL SHALL BE AT LEAST 3" ABOVE THE CROWN OF THE INLET PIPE AND SHALL MAINTAIN A 3" GAP FROM THE BOTTOM OF THE COVER.
9. SEE STD DETAIL SS-2A FOR REQUIREMENTS IN THIS AREA.
10. CORED FOR FLEXIBLE RUBBER BOOT PIPE CONNECTOR. FLEXIBLE PIPE CONNECTOR GROUTED AFTER INSTALLATION.
11. VAULT RISER SECTIONS AS REQUIRED (JOINT SEALANT AT ALL JOINTS)
12. HALFWAY BETWEEN FLOOR AND FLOW LINE (DEPTH OF FLOW MIDPOINT)

NO SCALE



**JORDAN BASIN**  
IMPROVEMENT DISTRICT

**SAND / OIL SEPARATOR**  
**DETAIL**

DRAWN:	DESIGNED:	CHECKED:	APPROVED:
DATE	FILE NAME	DRAWING NAME	
AUG 2024		PT-2	